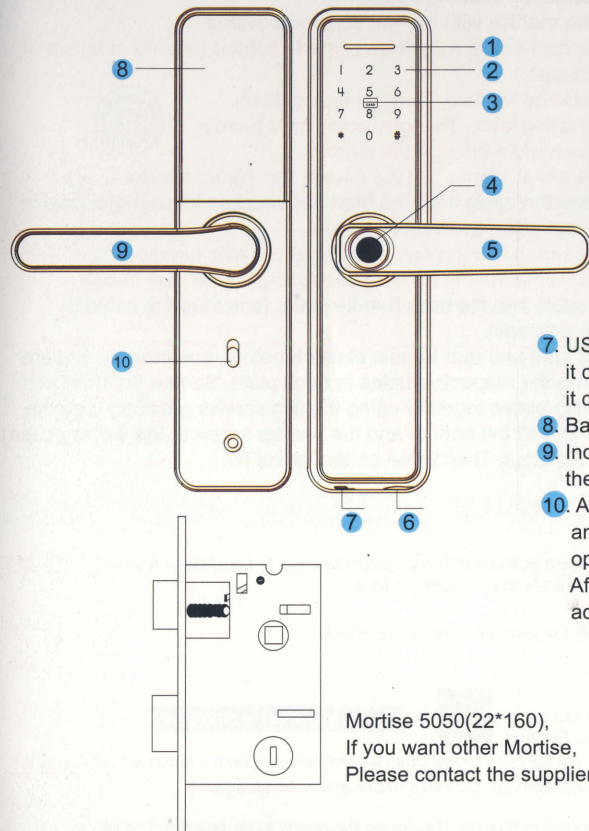


Smart lock Manual

Introduction



1. LED light, red light will not pass, green light will pass.
2. Password, touch the password to unlock.
3. Swipe IC card to unlock.
4. Fingerprint reader.
5. Outdoor handle. Press the handle down to open the door, and lift the handle up to lock the door.
6. Key. When the battery is out of power, the lock can be unlocked with a key.
7. USB interface. When the battery is dead, it can be unlocked by using an external battery, it cannot be charged.
8. Battery cover.
9. Indoor handle. Press the handle down to open the door, and lift the handle up to lock the door.
10. Anti-opening switch. After opening the anti-opening switch, only the administrator can open the door, but the user cannot open the door. After turning off the anti-open switch, both the administrator and the user can open the door.

Mortise 5050(22*160),
If you want other Mortise,
Please contact the supplier.

Technical Parameters

Administrators : 9 (On the lock)
Unlock methods : Fingerprint, password, card, key
tuya smart or smart life.
Quiescent current : <50-65uA
Lower voltage alarm : 4.5±0.2V
Power supply : 4.5V-6V(4 pcs batteries)
(Because it needs to be transported, the battery is not included.)

Fingerprint : ≤ 50
Card : ≤ 100
Password : ≤ 100
Password length : 6-8 bit
Phantom password : 16 bit
Working temperature : -10°C~60°C

Accessories

Item	Picture	Accessories	Quantity	Item	Picture	Accessories	Quantity
1		Mortise or latch	1pcs	5		Key	2pcs
2		Buckle Plate	1pcs	6		Square pole	1pcs
3		Buckle box	1pcs	7		Screw	2pcs
4		IC card	2pcs	8		Connecting rod	2pcs

Please read the manual carefully before installation and keep this manual at a secure place.

Any password, fingerprint, and IC card can be opened lock before leaving the factory (the length of the password is 6 digits), this is to facilitate user experience.

The temporary administrator password when leaving the factory is: 123456.

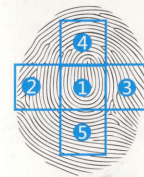
After you enter the administrator (Fingerprint is recommended) on the smart lock, The factory temporary password 123456 will automatically become invalid. Please enter your own administrator information for future settings.

Fake Password: For example: the correct password is 112233, we can enter (5566 112233 5566) when unlocking, (5566 is a false password at this time, in order to prevent others from remembering your password.)

Office mode: Press 5# after opening the door. At this time, anyone can open the door without pressing fingerprints, passwords or cards.

Cancel office mode: When the administrator or user opens the lock once, the system will automatically cancel the office mode.

Enroll fingerprint: Press *# to enter the smart lock system and enroll fingerprint.



Press 5 times on the fingerprint reader, and the angle of each press is as different as possible. This is to allow all the fingerprints on the finger to be entered into lock, so that it will be more convenient to unlock. The red light is on to indicate that the fingerprint has failed to be added, and the green light is on to indicate that the fingerprint is added successfully.

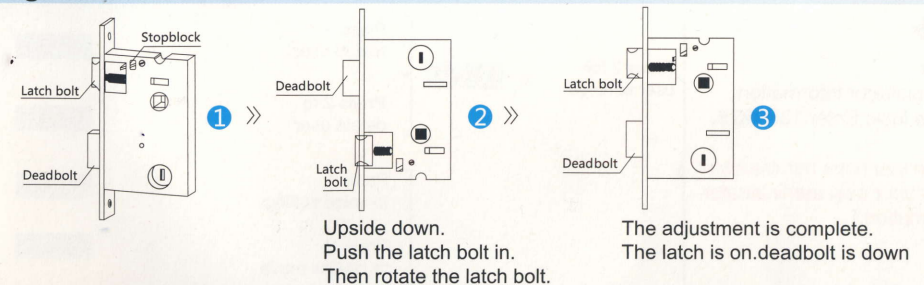
(Refer to the right picture for the angle of fingerprint input)

* is the reverse, # is the confirm. After the system setting is completed, you can press * to return or wait for the system to exit automatically.

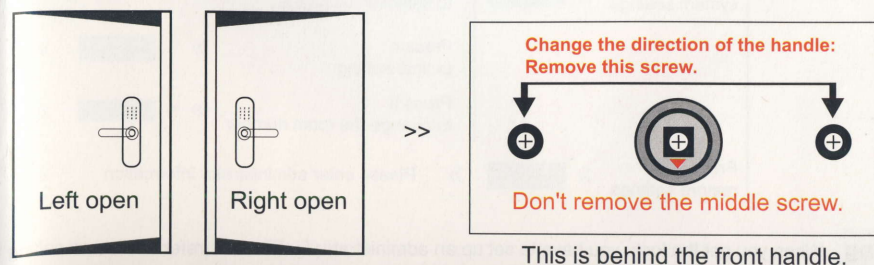
Door Thickness

Smart lock suitable to 35mm ~65mm thickness door. If you want to install on a 90mm thickness door, please replace the long square pole.

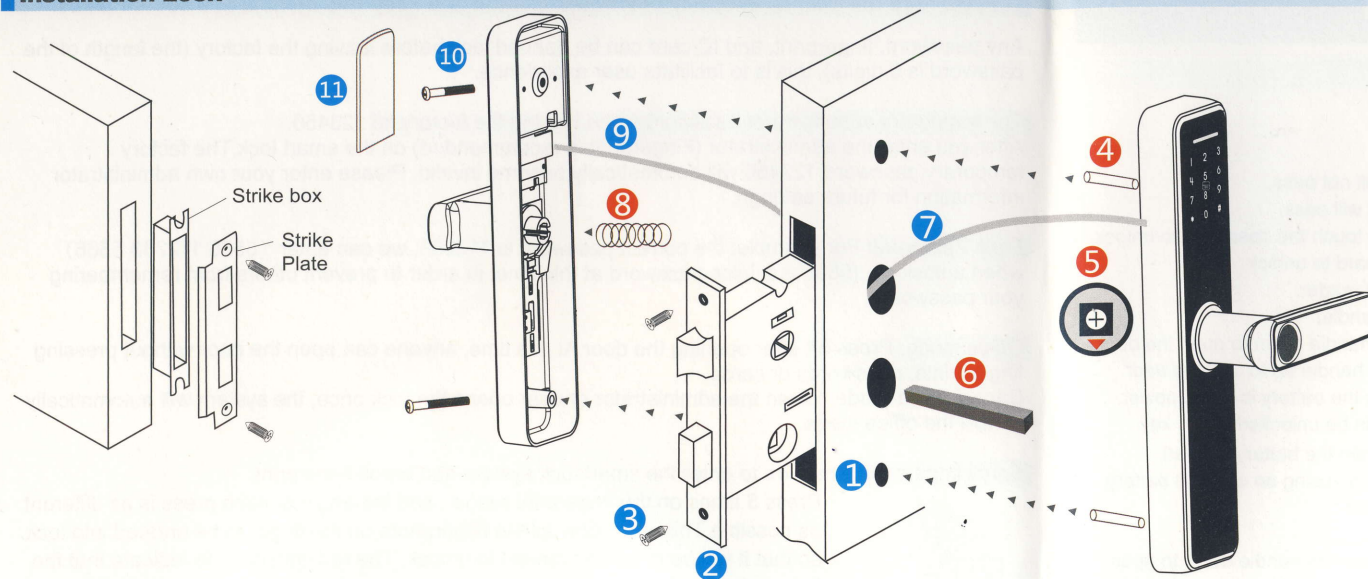
Change Mortise Direction



Determine the door direction



Installation Lock



(The words in red are: matters needing attention)

- 1 Chisel holes in door using the template provided.
- 2 Insert mortise in the door, ensuring that the latch bolt is at the top and the deadbolt is at the bottom.
- 3 Secure the mortise with the two screws provided.
- 4 Install the connecting rods (Use pliers to tighten, Be sure to tighten it, or it will loosen.).
- 5 When installing Mortise, Triangle facing down.
- 6 Insert square pole through the mortise.
For doors within 35mm, cut the square rod 10mm shorter.
- 7 Gently feed the cable from the front handle plate through the hole in the door and insert the front handle.
- 8 Insert the spring into the square hole on the rear handle.
For doors within 40mm, do not put a spring on the rear handle.
- 9 plug the cable into the back handle plate. (ensuring the cable is clipped in properly).
- 10 bring the front and rear handle plates together, ensuring the square rod fits into the respective holes in each plate. Secure the front and rear handle plates together using the two screws provided (use the longer screw at the bottom and the shorter screw at the Battery case).
- 11 Insert 4 batteries. Then close battery cover lid.

Lock Setting



Press “*#”

Enter administrator information.
(New lock: Enter 123456 #.

When you have administrator,
enter your own administrator
information.)

Press 1 for administrator settings	»	Press 1	»	Press 1	»	Press 1 to add administrator	»	Press 1	»
				Press 2	»	Press 2 to delete administrator	»	Press 2	»
						Press 3 to Internet settings	»	Press 3	»
Press 2 for user settings	»	Press 2	»	Press 1	»	Press 1 to add user	»	Press 1	»
				Press 2	»	Press 2 to delete user	»	Press 2	»
Press 3 for system settings	»	Press 3	»	Press 1	»	Press 1 to voice setting	»	Press 1	»
				Press 2	»	Press 2 to Unlock mode	»	Press 2	»
				Press 3	»	Press 3 to selection language	»	Press 3	»
				Press 4	»	Press 4 to time setting	»	Press 4	»
				Press 5	»	Press 5 to change the room number	»	Press 5	»
Press 4 for restore settings	»	Press 4	»			Please enter administrator information	»		»

Enter administrator information(Enter fingerprint, password or IC card,The fingerprint needs to be entered 5 times, the password needs to be entered 2 times, and the IC needs to be entered 1 time.

Enter number press # confirm(002#)(Unable to delete all, the first administrator reserved)

Hotspot connection press “1”

Intelligent connection press “2” (TUYA) » 1, 2 lights are on, 5 lights are flashing. » **Open tuyu smart or smart life.**
(If 2 does not light up, check whether Anti-opening switch is turned on. Close it.)
(If 2 does not light up, click * to return and connect again.)

Enter administrator information(Enter fingerprint, password or IC card,The fingerprint needs to be entered 5 times, the password needs to be entered 2 times, and the IC needs to be entered 1 time.

Press 1 to delete according to the number » Please enter the number and press # to confirm.
Press 2 to delete all users » Press # to confirm, the system will delete all users.

Press 1 to turn on voice, Press 2 to turn off the voice.

Press 1 is one way to unlock.(Any way to unlock, fingerprint, password or IC card.)
Press 2 to unlock the lock in two ways.(It must use two ways to unlock, two different passwords or passwords & fingerprints.)

Press 1 Chinese, Press 2 English.

The system will say the current time, and the screen will display all the numbers. Please enter the time in the local country, for example: 202008241608 (2020 is the year, 08 is August, 24 is the 24th, 16 is 16 o'clock, 08 is 8 minutes.
(Month , Day, hour, minute, please enter 2 digits).

The system default room number is 8888, you can enter the room number you need.(Character 1-5).

The screen light flashes and the recovery is successful.

The First Thing

When you get the lock, you have to set up an administrator for the lock (refer to the lock setting above for the method). Because the following settings need to enter the administrator verification.